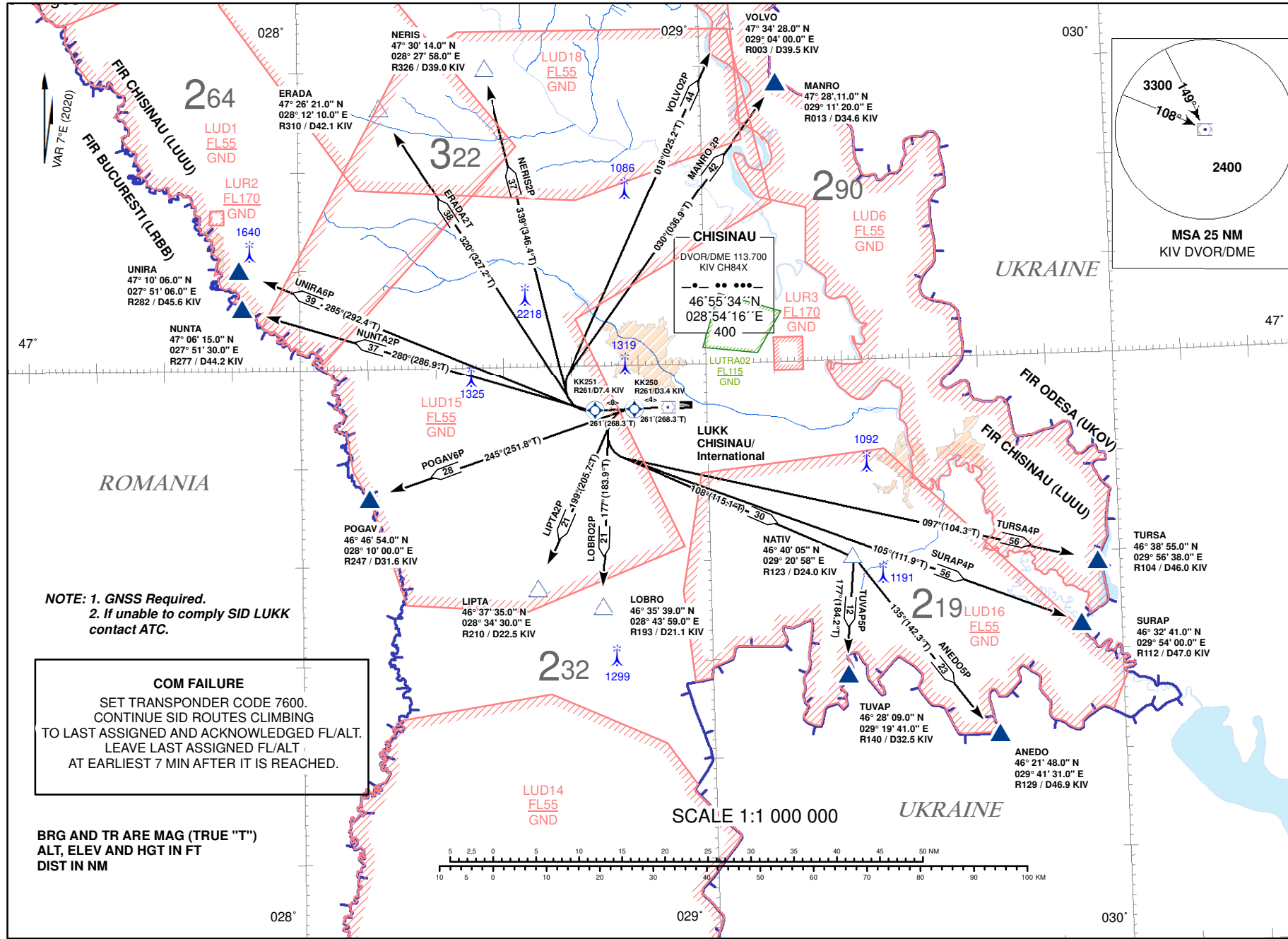
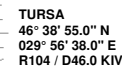


TRANSITION
ALTITUDE 4000FT

CHISINAU/Inti (LUKK)

RWY 26

ANED05P, EHADA2I, LIP1A2P, LOBHO2P,
MANRO2P, NERIS2P, NUNTA2P, POGAV6P,
SURAP4P, TURSA4P, TUVAP5P, UNIRA6P, VOLVO2P



**NOTE: 1. GNSS Required.
2. If unable to comply SID LUKK
contact ATC.**

COM FAILURE
SET TRANSPONDER CODE 7600.
CONTINUE SID ROUTES CLIMBING
TO LAST ASSIGNED AND ACKNOWLEDGED FL/ALT.
LEAVE LAST ASSIGNED FL/ALT
AT EARLIEST 7 MIN AFTER IT IS REACHED.

BRG AND TR ARE MAG (TRUE "T")
ALT, ELEV AND HGT IN FT
DIST IN NM

SCALE 1:1 000 000

UKRAINE

**RNAV(GNSS), VOR/DME OVERLAY
STANDARD INSTRUMENT
DEPARTURE (SID) - ICAO**
**CHISINAU/Intl (LUKK)
RWY 26**
Procedure Coding Table

Path Terminator	Waypoint			Course/Track MAG (True)	Dist NM	Turn Direction	Constraints		Navigation Specification	Remarks
	Identifier	Flyover	Coordinates				Level	Speed (kt IAS)		
ANEDO5P										
CF	KK250	Yes	465532.1N 0284920.2E	261 (268.3)	3.5	-	-	-	RNAV 1	Turn at KK250 is calculated with bank 20° and speed 240kt IAS
DF	NATIV	No	464005.0N 0292058.0E	108 (115.1)	30.1	L	-	-		
TF	ANEDO	No	462148.0N 0294131.0E	135 (142.3)	23.2	R	+FL90	-		
ERADA2T										
CF	KK251	Yes	465524.7N 0284330.2E	261 (268.3)	7.5	-	-	-	RNAV 1	Turn at KK251 is calculated with bank 20° and speed 240kt IAS
DF	ERADA	No	472621.0N 0281210.0E	320 (327.2)	38.1	R	+FL80	-		
LIPTA2P										
CF	KK250	Yes	465532.1N 0284920.2E	261 (268.3)	3.5	-	-	-	RNAV 1	Turn at KK250 is calculated with bank 20° and speed 240kt IAS
DF	LIPTA	No	463735.0N 0283430.0E	199 (205.7)	21.1	L	+FL80	-		
LOBRO2P										
CF	KK250	Yes	465532.1N 0284920.2E	261 (268.3)	3.5	-	-	-	RNAV 1	Turn at KK251 is calculated with bank 20° and speed 240kt IAS
DF	LOBRO	No	463539.0N 0284359.0E	177 (183.9)	21.3	L	+FL80	-		
MANRO2P										
CF	KK251	Yes	465524.7N 0284330.2E	261 (268.3)	7.5	-	-	-	RNAV 1	Turn at KK250 is calculated with bank 20° and speed 240kt IAS
DF	MANRO	No	472811.0N 0291120.0E	030 (036.9)	41.6	R	+FL90	-		
NERIS2P										
CF	KK251	Yes	465524.7N 0284330.2E	261 (268.3)	7.5	-	-	-	RNAV 1	Turn at KK251 is calculated with bank 20° and speed 240kt IAS
DF	NERIS	No	473014.0N 0282758.0E	339 (346.4)	37.4	R	+FL80	-		
NUNTA2P										
CF	KK251	Yes	475524.7N 0284330.2E	261 (268.3)	7.5	-	-	-	RNAV 1	Turn at KK251 is calculated with bank 20° and speed 240kt IAS
DF	NUNTA	No	470615.0N 0275130.0E	280 (286.9)	37.2	R	+FL80	-		
POGAV6P										
CF	KK250	Yes	465532.1N 0284920.2E	261 (268.3)	3.5	-	-	-	RNAV 1	Turn at KK250 is calculated with bank 20° and speed 240kt IAS
DF	POGAV	No	464654.0N 0281000.0E	245 (251.8)	28.3	L	+FL80	-		
SURAP4P										
CF	KK250	Yes	465532.1N 0284920.2E	261 (268.3)	3.5	-	-	-	RNAV 1	Turn at KK250 is calculated with bank 20° and speed 240kt IAS
DF	SURAP	No	463241.0N 0295360.0E	105 (111.9)	55.8	L	+FL90	-		
TURSA4P										
CF	KK250	Yes	465532.1N 0284920.2E	261 (268.3)	3.5	-	-	-	RNAV 1	Turn at KK250 is calculated with bank 20° and speed 240kt IAS
DF	TURSA	No	463855.0N 0295638.0E	097 (104.3)	55.6	L	+FL90	-		
TUVAP5P										
CF	KK250	Yes	465532.1N 0284920.2E	261 (268.3)	3.5	-	-	-	RNAV 1	Turn at KK250 is calculated with bank 20° and speed 240kt IAS
DF	NATIV	No	464005.0N 0292058.0E	108 (115.1)	30.1	L		-		
TF	TUVAP	No	462809.0N 0291941.0E	177 (184.2)	12.0	R	+FL90	-		
UNIRA6P										
CF	KK251	Yes	475524.7N 0284330.2E	261 (268.3)	7.5	-	-	-	RNAV 1	Turn at KK251 is calculated with bank 20° and speed 240kt IAS
DF	UNIRA	No	471006.0N 0275106.0E	285 (292.4)	38.8	R	+FL80	-		
VOLVO2P										
CF	KK251	Yes	475524.7N 0284330.2E	261 (268.3)	7.5	-	-	-	RNAV 1	Turn at KK251 is calculated with bank 20° and speed 240kt IAS
DF	VOLVO	No	473428.0N 0290400.0E	018 (025.2)	44.4	R	+FL90	-		